

# CERTIFICATE OF LOCATION OF GOVERNMENT CORNER

NORTHEAST Corner of Section 15, Township 110, Range 17, 5TH P.M.

STATE OF MINNESOTA, County of GOODHUE.

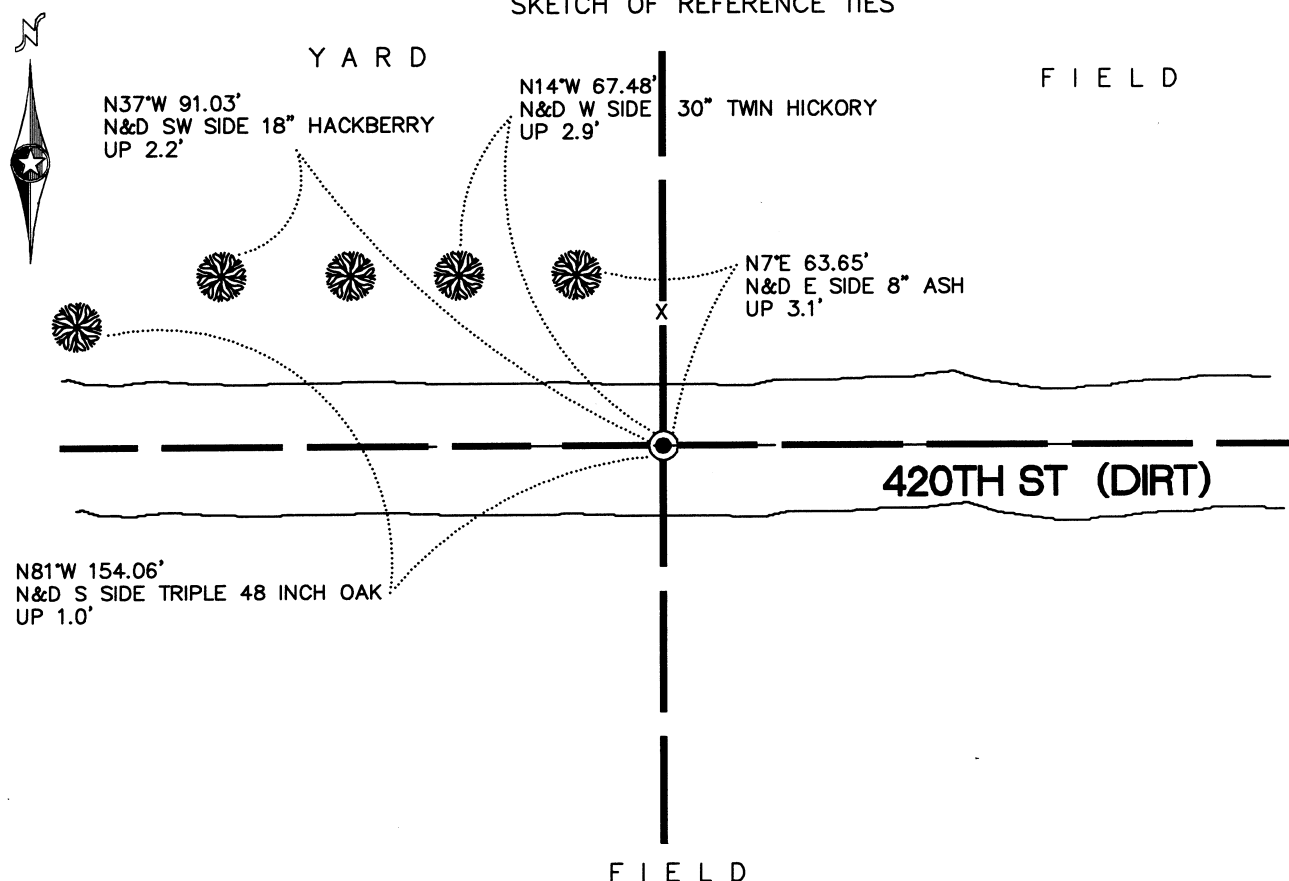
At the corner location shown on the sketch

☐ ON \_\_\_\_\_ found \_\_\_\_\_

☐ left monument as found, ☐ lowered monument, ☒ removed monument (explain)

☒ ON 8/14/00 placed a GOODHUE COUNTY BRASS CAP MONUMENT

## SKETCH OF REFERENCE TIES



Statement of evidence relative to this corner is on back of page.

I hereby certify that this document and the data contained herein was prepared by me or under my direct supervision.

Dennis Z. Robinson  
SIGNATURE

3/08/04  
DATE

Registration No. 19096

☐ Land surveyor, ☐ Professional Engineer

☒ Deputy County Surveyor, ☐ County Engineer

## OFFICE OF THE COUNTY RECORDER

County of GOODHUE.

I hereby certify that this document was filed in the Co. Recorders office at \_\_\_\_\_ .M. on the day of \_\_\_\_\_ A.D., 20

County Recorder \_\_\_\_\_

By \_\_\_\_\_, Deputy

DOCUMENT NO. \_\_\_\_\_